

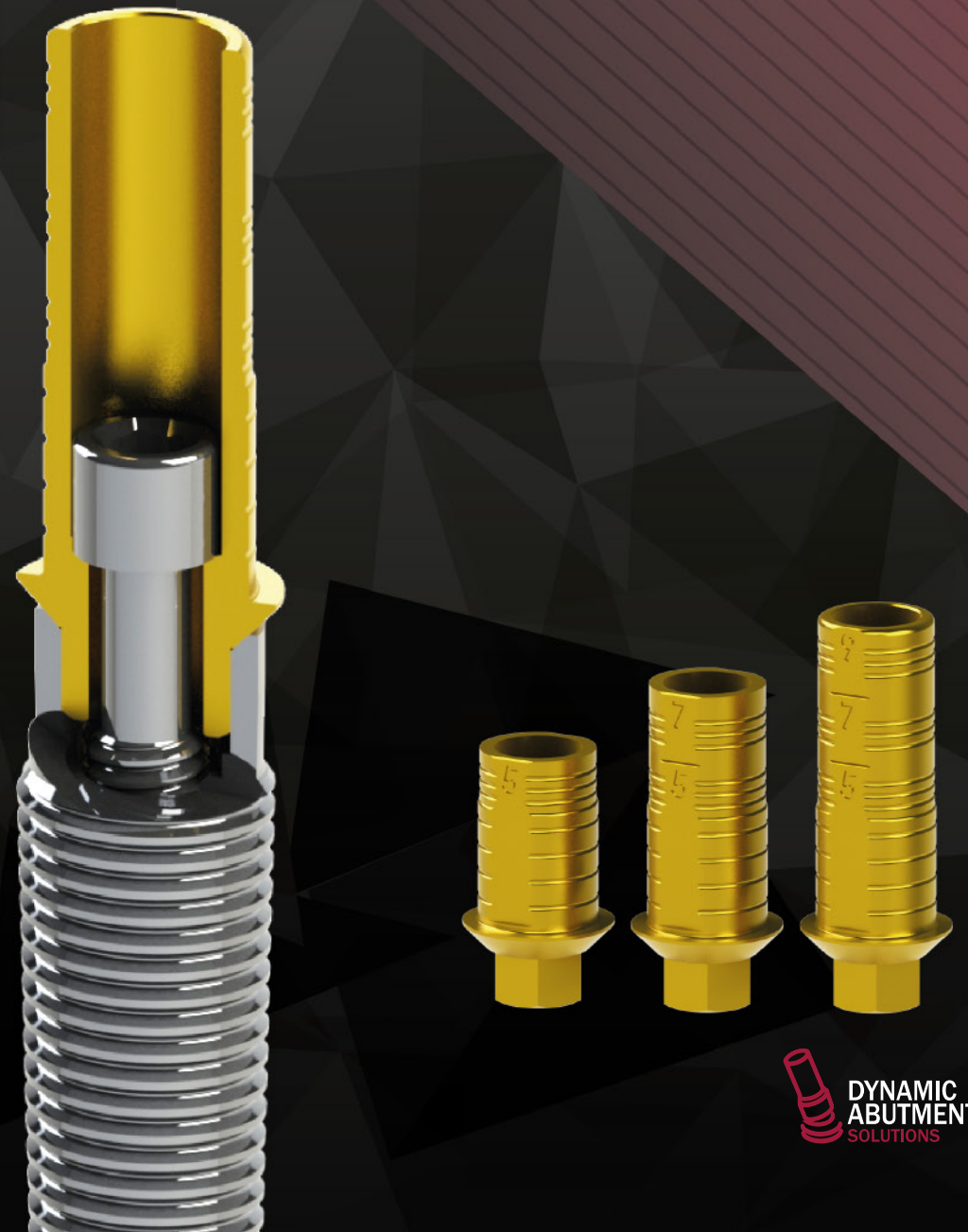
STRAIGHT TIBASE®



AV. BLONDEL, 54 3°
25002 LLEIDA (SPAIN)
TEL. +34 873 450 709
das@dynamicabutment.com
www.dynamicabutment.com

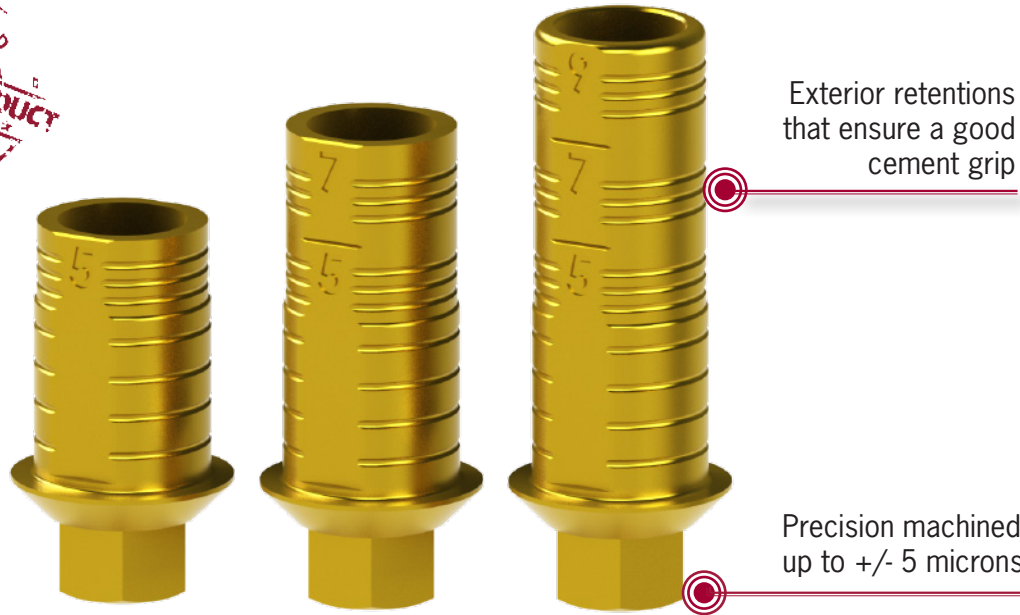


VERSION 2019/01



Straight 3TiBase®

Compatibilities available



Exterior retentions that ensure a good cement grip

Precision machined up to +/- 5 microns

2 cutting options

- ✦ Cad-Cam structures made of Zirconium, metal and PMMA.
- ✦ Perfect adjustment of the prosthetic part with the implant.
- ✦ Different cement heights: 5, 7 or 9 mm.
- ✦ Grade V Dynamic TiBase® are gold anodized to improve the work's aesthetic.



For intraoral and extraoral scanning it must be used the Dynamic µ Scanbody



Straight screw

MAIN CONNECTION *	CODE	ROTATION	GH: GINGIVAL HEIGHT	STRAIGHT 3TIBASE	STRAIGHT SCREW	HEAD CONNECTION STRAIGHT SCREW	LIBRARY CODE
3I CERTAIN 3.4	0001	NR	0,3	35.312.001.21-2	40.316.003.01-2	HEX 1.20	DAS_I_0001
		R	0,3	35.322.001.21-2			
3I CERTAIN 4.1	0002	NR	0,3	35.313.002.21-2	40.316.003.01-2	HEX 1.20	DAS_I_0002
		R	0,3	35.323.002.21-2			
3I CERTAIN 5.0	0057	NR	0,5	35.314.057.21-2	40.316.003.01-2	HEX 1.20	DAS_I_0057
		R	0,5	35.324.057.21-2			
3I OSSEOTITE 3.4	0003	NR	0,3	35.312.003.21-2	40.320.003.02-2	HEX 1.20	DAS_I_0003
		R	0,3	35.322.003.21-2			
3I OSSEOTITE 4.1	0024	NR	0,3	35.313.024.21-2	40.320.003.02-2	HEX 1.20	DAS_I_0024
		R	0,3	35.323.024.21-2			
3I OSSEOTITE 5.0	0058	NR	0,5	35.314.058.21-2	40.320.003.02-2	HEX 1.20	DAS_I_0058
		R	0,5	35.324.058.21-2			
ANKYLOS	0075	R	1	35.322.075.21-2	40.318.013.01-2	HEX 1.00	DAS_I_0075
ASTRA YELLOW	0109	NR	1,2	35.312.109.21-2	40.314.005.02-2	HEX 1.27	DAS_I_0109
		R	1,2	35.322.109.21-2			
ASTRA AQUA	0004	NR	1	35.313.004.21-2	40.316.005.02-2	HEX 1.27	DAS_I_0004
		R	1	35.323.004.21-2			
ASTRA LILAC	0005	NR	1	35.314.005.21-2	40.320.005.03-2	HEX 1.27	DAS_I_0005
		R	1	35.324.005.21-2			
ASTRA EV 3.0	0090	NR	1	35.311.090.21-2	40.314.005.01-2	HEX 1.27	DAS_I_0090
		R	1	35.321.090.21-2			
ASTRA EV 3.6	0006	NR	1,2	35.312.006.21-2	40.316.005.01-2	HEX 1.27	DAS_I_0006
		R	1,2	35.322.006.21-2			
ASTRA EV 4.2	0007	NR	1,5	35.313.007.21-2	40.318.005.02-2	HEX 1.27	DAS_I_0007
		R	1,5	35.323.007.21-2			
ASTRA EV 4.8	0091	NR	1,2	35.314.091.21-2	40.320.005.01-2	HEX 1.27	DAS_I_0091
		R	1,2	35.324.091.21-2			
ASTRA EV 5.4	0092	NR	1	35.315.092.21-2	40.320.005.01-2	HEX 1.27	DAS_I_0092
		R	1	35.325.092.21-2			
NOBEL BIO CARE ACTIVE 3.0	0159	NR	1,5	35.310.159.21-2	40.314.008.02-2	UNIGRIP	DAS_I_0159
		R	1,5	35.320.159.21-2			
NOBEL BIO CARE ACTIVE 3.5	0021	NR	1,48	35.312.021.21-2	40.316.008.02-2	UNIGRIP	DAS_I_0021
		R	1,48	35.322.021.21-2			
NOBEL BIO CARE ACTIVE 4.3	0022	NR	0,3	35.313.022.21-2	40.320.008.02-2	UNIGRIP	DAS_I_0022
		R	0,3	35.323.022.21-2			
NOBEL BIO CARE ACTIVE 5.0	0124	NR	1,4	35.314.124.21-2	40.320.008.02-2	UNIGRIP	DAS_I_0124
		R	1,4	35.324.124.21-2			
NOBEL BIO CARE BRANEMARK NP	0023	NR	0,3	35.312.023.21-2	40.316.008.01-2	UNIGRIP	DAS_I_0023
		R	0,3	35.322.023.21-2			
NOBEL BIO CARE BRANEMARK RP	0024	NR	0,3	35.313.024.21-2	40.320.008.01-2	UNIGRIP	DAS_I_0024
		R	0,3	35.323.024.21-2			
NOBEL BIO CARE BRANEMARK WP	0061	NR	0,6	35.314.061.21-2	40.325.008.01-2	UNIGRIP	DAS_I_0061
		R	0,6	35.324.061.21-2			
NOBEL BIO CARE REPLACE NP	0026	NR	0,48	35.312.026.21-2	40.318.008.01-2	UNIGRIP	DAS_I_0026
		R	0,48	35.322.026.21-2			
NOBEL BIO CARE REPLACE RP	0027	NR	0,3	35.313.027.21-2	40.320.008.03-2	UNIGRIP	DAS_I_0027
		R	0,3	35.323.027.21-2			
NOBEL BIO CARE REPLACE WP	0028	NR	0,3	35.314.028.21-2	40.320.008.03-2	UNIGRIP	DAS_I_0028
		R	0,3	35.324.028.21-2			
NOBEL BIO CARE REPLACE 6.0	0129	NR	0,3	35.315.129.21-2	40.320.008.03-2	UNIGRIP	DAS_I_0129
		R	0,3	35.325.129.21-2			
STRAUMANN BONE LEVEL NP	0033	NR	1,3	35.312.033.21-2	40.316.007.01-2	TORX T6	DAS_I_0033
		R	1,3	35.322.033.21-2			
STRAUMANN BONE LEVEL RP	0035	NR	1,09	35.313.035.21-2	40.316.007.01-2	TORX T6	DAS_I_0035
		R	1,09	35.323.035.21-2			
STRAUMANN TISSUE LEVEL NNC	0160	NR	0,5	35.310.160.21-2	40.316.007.01-2	TORX T6	DAS_I_0160
		R	0,5	35.320.160.21-2			
STRAUMANN SYNOCTA 4.8	0037	NR	0,56	35.313.037.21-2	40.320.007.01-2	TORX T6	DAS_I_0037
		R	0,56	35.323.037.21-2			
STRAUMANN SYNOCTA 6.5	0096	NR	0,6	35.314.096.21-2	40.320.007.01-2	TORX T6	DAS_I_0096
		R	0,6	35.324.096.21-2			
ZIMMER SCREW-VENT 3.5	0040	NR	0,6	35.312.040.21-2	40.317.004.01-2	HEX 1.27	DAS_I_0040
		R	0,6	35.322.040.21-2			
ZIMMER SCREW-VENT 4.5	0041	NR	0,4	35.313.041.21-2	40.317.004.01-2	HEX 1.27	DAS_I_0041
		R	0,4	35.323.041.21-2			
ZIMMER SCREW-VENT 5.7	0080	NR	0,4	35.314.080.21-2	40.317.004.01-2	HEX 1.27	DAS_I_0080
		R	0,4	35.324.080.21-2			

* Check new compatibilites available emailing: das@dynamicabutment.com